

Product Sheet

H_αvβ6 MC38 Cell Line

Catalog number: GM-C31429

Version 3.3.1.241125

Description	H_αvβ6 MC38 Cell Line is a clonal stable MC38 cell line that constitutively expresses the human ITGAV and human ITGB6 genes, constructed using lentiviral technology.
Quantity	5E6 Cells per vial, 1 mL
Product Format	1 vial of frozen cells
Shipping	Shipped on dry ice
Storage Conditions	Liquid nitrogen immediately upon receipt
Target	Human_ITGAV & Human_ITGB6
Gene ID/Uniprot ID	P06756-1 & P18564-1
Host Cell	MC38
Recovery Medium	DMEM+10% FBS+1% P.S
Growth medium	DMEM+10% FBS+1% P.S+500 μg/mL Bleomycin+200 μg/mL Hygromycin
Note	None
Freezing Medium	90% FBS+10% DMSO
Growth properties	Adherent
Growth Conditions	37°C, 5% CO ₂
Mycoplasma Testing	The cell line has been screened to confirm the absence of Mycoplasma species.
Safety considerations	Biosafety Level 2
Note	It is recommended to expand the cell culture and store a minimum of 10 vials at an early passage for potential future use.

Materials

Reagent	Manufacturer/Catalogue No.
DMEM	VivaCell/C3110-0500
Fetal Bovine Serum	Cegrogen biotech/A0500-3010
Pen/Strep	Thermo/15140-122
Bleomycin	Genomeditech/GM-040407
Hygromycin	Genomeditech/GM-040403
Anti- α v hIgG2 Antibody(Abituzumab)	Genomeditech/GM-49298AB
Anti- α v β 6 hIgG1 Antibody(m15H3)	Genomeditech/GM-53193AB

Figures

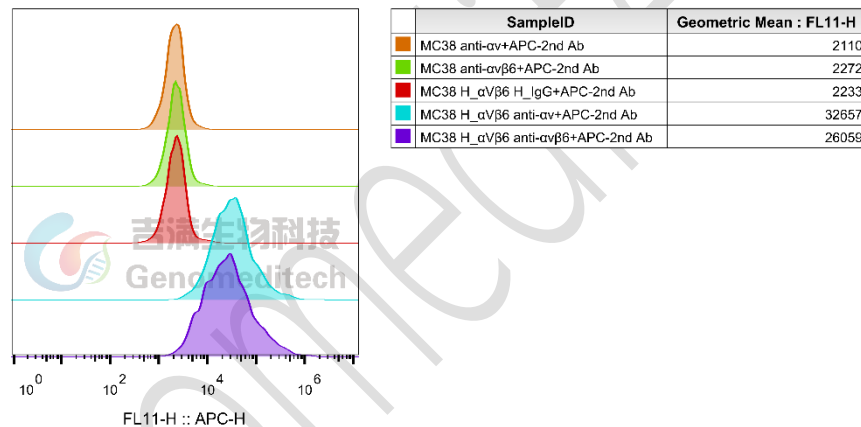


Figure 1 | H_ α v β 6 MC38 Cell Line (Cat. GM-C31429) was determined by flow cytometry using Anti- α v hIgG2 Antibody(Abituzumab) (Cat. [GM-49298AB](#)) and Anti- α v β 6 hIgG1 Antibody(m15H3) (Cat. [GM-53193AB](#)).

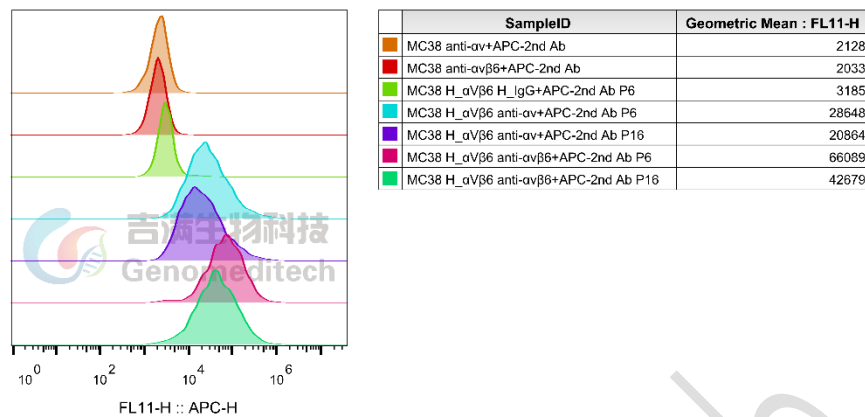


Figure 2 | The passage stability of the H_αvβ6 MC38 Cell Line (Cat. GM-C31429) was determined by flow cytometry using Anti-αv hIgG2 Antibody(Abituzumab) (Cat. [GM-49298AB](#)) and Anti-αvβ6 hIgG1 Antibody(m15H3) (Cat. [GM-53193AB](#)).

Cell Recovery

Recovery Medium: DMEM+10% FBS+1% P.S

To insure the highest level of viability, thaw the vial and initiate the culture as soon as possible upon receipt. If upon arrival, continued storage of the frozen culture is necessary, it should be stored in liquid nitrogen vapor phase and not at -70°C. Storage at -70°C will result in loss of viability.

- Thaw the vial by gentle agitation in a 37°C water bath. To reduce the possibility of contamination, keep the O-ring and cap out of the water. Thawing should be rapid (approximately 2 - 3 minutes).
- Remove the vial from the water bath as soon as the contents are thawed, and decontaminate by dipping in or spraying with 70% ethanol. All of the operations from this point on should be carried out under strict aseptic conditions.
- Transfer the vial contents to a centrifuge tube containing 5.0 mL complete culture medium and spin at approximately 176 x g for 5 minutes. Discard supernatant.
- Resuspend cell pellet with the recommended recovery medium. And dispense into appropriate culture dishes.
- Incubate the culture at 37°C in a suitable incubator. A 5% CO₂ in air atmosphere is recommended if using the medium described on this product sheet.

Cell Freezing

Freezing Medium: 90% FBS+10% DMSO

- Centrifuge at 176 x g for 3 minutes to collect cells.
- Resuspend the cells in pre-cooled freezing medium and adjust the cell density to 5E6 cells/mL.
- Aliquot 1 mL into each vial.
- Place the vial in a controlled-rate freezing container and store at -80°C for at least 1 day, then transfer to liquid nitrogen as soon as possible.

Cell passage

Growth medium: DMEM+10% FBS+1% P.S+500 µg/mL Bleomycin+200 µg/mL Hygromycin

For the first 1 to 2 passages post-resuscitation, use the recovery medium. Once the cells have stabilized, switch to a growth medium.

- Remove and discard culture medium.
- Briefly rinse the cell layer with PBS to remove all traces of serum that contains trypsin inhibitor.
- Add 1.0 mL of 0.25% (w/v) Trypsin-EDTA solution to dish and observe cells under an inverted microscope until cell layer is dispersed (usually within 30 to 60 seconds at 37°C).
- Note: To avoid clumping do not agitate the cells by hitting or shaking the flask while waiting for the cells to detach. Cells that are difficult to detach may be placed at 37°C to facilitate dispersal.
- Add 2.0 mL of growth medium to mix well and aspirate cells by gently pipetting.
- After centrifugation, resuspend the pellet and add appropriate aliquots of the cell suspension to new culture vessels.
- Incubate cultures at 37°C.

Subcultivation Ratio: A subcultivation ratio of 1:4 - 1:5 is recommended

Medium Renewal: Every 2 to 3 days

Notes

- After the stabilization of the cell condition, there will be fewer dead cells post-passage, the cell growth rate will tend to stabilize, cell morphology will become uniform, and the cells will appear robust.

Sequence

ITGAV [P06756-1](#)

MAFPPRRRLRLGPRGLPLLLSGLLLPLCRAFNLVDSPAESGPEGSYFGFAVDFVPSASSRMFLLVGAPKA
NTTQPGIVEGGQVLKCDWSSSTRRCQPIEFDATGNRDYAKDDPLEFKSHQWFGASVRSKQDKILACAPLYHW
RTEMKQEREPVGTFCFLQDGTKTVEYAPCRSQDIDADGQGFCQGGSIDFTKADR VLLGGPGSFYWQQLISD
QVAEIVSKYDPNVYSIKYNNQLATRTAQAIFFDSSYLGYSVAVGDFNGDGIDDFVSGVPRAARTLGMVYIYDG
KNMSSLYNFTGEQMAAYFGFSVAATDINGDDYADVFIGAPLFMDRGSQGLQEVGQVSVSLQRASGDFQTT
KLNQFEVVFARFGSAIAPLGDLDQDGFNDIAIAAPYGGEDKKGIVYIFNGRSTGLNAVPSQILEGQWAARSMPP
SFGYSMKGATDIDKNGYPDLIVGAFGVDRAILYRARPVITVNAGLEVYPSILNQDNKTCSLPGTALKVSCFNV
RFCLKADGKGVLPKLNQVVELLDKQKGAIRRALFLYSRSPSHSKNMTISRGLMQCEELIAYLRDESEF
RDKLTPITIFMEYRLDYRTAADTTGLQPILNQFTPANISRQAHILLDCGEDNVCKPKLEVSVDSDQKKIYIGDD
NPLTLIVKAQNQGEGA YEAELIVSIPLQADFIGVVRNNEALARLSCAFKTENQTRQVVC DLGNPMKAGTQLL
AGLRFVSHQQSEMDSVKFDLQIQSSNLFDKVSPVVSHKVDLAVLAAVEIRGVSSPDHVFPIPNWEHKENPE
TEEDVGPVVQHIYELRNNGPSSFSKAMLHLQWPYKYNNTLLYILHYDIDGPMNCTSDMEINPLRIKISSLQT
TEKNDTVAGQGERDHLITKRDLALSEGDIHTLGCQVAQCLKIVCQVGRDLRGKSAILYVKSLLWTETFMNKE
NQNHSSYLSKSSASFNVIEFPYKNLPIEDITNSTLVTNTVWGIQAPMPVPVWVILAVLAGLLLLAVLVFVMY
RMGFFKRVPPQEEQEREQLQPHENGEENSET

ITGB6 P18564-1

MGIELLCLFFLFLGRNDHVQGGCALGGAETCEDCLLIGPQCAWCAQENFTHPSGVGERCDTPANLLAKGCQL
 NFIENPVSQVEILKNKPLSVGRQKNSSDIVQIAPQSLILKLRPGGAQTLQVHVRQTEDYPVDLYYLMDSLASM
 DDDLNTIKELGSRLSKEMSKLTSNFRLLGFGSFVEKPVSPFVKTTPEEIANPCSSIPYFCLPTFGFKHILPLTNDAE
 RFNEIVKNQKISANIDTPEGGFDAIMQAAVCKEKIGWRNDSLHLLVFSVDADSHFGMDSKLAGIVIPNDGLCH
 LDSKNEYSMSTVLEYPTIGQLIDKLVQNNVLLIFAVTQEQVHLYENYAKLIPGATVGLLQKDSGNILQLIISAY
 EELRSEVELEVLGDTEGLNLSFTAICNNGTLFQHQQKCSHMKVGDASFSVTVNIPHCERRSRHIIKPVGLGD
 ALELLVSPECNDCQKEVEVNSSKCHHGNGSFQCGVCACHPGHMGRCECGEDMLSTDSCKEAPDHPSCSG
 RGDCYCGQCICHLSPYGNIGPYCQCDNFSCVRHKGLLCCGGNGDCDCGECVCRSGWTGEYCNCTTSTDSCV
 SEDGVLCSGRGDCVCGKCVCTNPGASGPTCERCPTCGDPCNSKRSCIECHLSAAGQAREECVDKCKLAGATI
 SEEEDFSKDGSVSCSLQGENECLITFLITDNEGKTIHSINEKDCPKPPNIPMIMLGVSLAILLIGVVLLCIWKLL
 VSFHDRKEVAKFEAERSKAKWQTGTNPLYRGSTSTFKNVTYKHREKQKVDLSTDC

Related Products

TGF-β:GARP:αβ6	
H_GARP Latent TGFB1 Reporter HEK-293 Cell Line	TGF-β Reporter 293 DDX35TM Cell Line
TGF-β Reporter HEK-293 Cell Line	Cynomolgus_αβ6 HEK-293 Cell Line
H_GARP CHO-K1 Cell Line	H_GARP HEK-293 Cell Line
H_GARP Latent TGF-β1 CHO-K1 Cell Line	H_GARP Latent TGF-β1 HEK-293 Cell Line
H_ITGB6 CHO-K1 Cell Line	H_ITGB6 HEK-293 Cell Line
H_αβ6 CT26 Cell Line	H_αβ6 HEK-293 Cell Line
H_αβ6 LLC1 Cell Line	
Anti-GARP-TGF-β1 hIgG4 Antibody(ARGX-115)	Anti-H_ITGB6 hIgG1 Reference Antibody (h2A2)
Anti-ITGB6 hIgG1 Antibody(SGN-B6A)	Anti-TGFB1 hIgG4 Antibody(SRK-181)
Anti-αβ hIgG2 Antibody(Abituzumab)	Anti-αβ6 hIgG1 Antibody(m15H3)
Anti-ITGB6-MMAE ADC(Dar4)[SGN-B6A]	
ADC Related Product	
Anti-DXD Mouse IgG1 Antibody (23E21C5)	Anti-DXD Mouse IgG1 Antibody (4A5A12)
Anti-Dxd Mouse IgG2a Antibody (17D6A4)	Anti-Eribulin Mouse IgG2a Antibody (10F8G4)
Anti-MMAE Mouse IgG1 Antibody (11C10E3)	Anti-MMAE Mouse IgG2a Antibody (17A1K11)
Anti-MMAE Mouse IgG2a Antibody (8F6A3)	Mouse anti Human IgG-MMAE(Dar4)
Human IgG1 Isotype-DXD (Dar8)	Human IgG1 Isotype-Eribulin (Dar4)
Human IgG1 Isotype-MMAE (Dar4)	
Recombinant DT3C Protein	

Limited Use License Agreement

Genomeditech (Shanghai) Co., Ltd grants to the Licensee all intellectual property rights, exclusive, non-transferable, and non-sublicensable rights of the Licensed Materials; Genomeditech (Shanghai) Co., Ltd will retain ownership of the Licensed Materials, cell line history packages, progeny, and the Licensed Materials including modified materials.

Between Genomeditech (Shanghai) Co., Ltd, and Licensee, Licensee is not permitted to modify cell lines in any way. The Licensee shall not share, distribute, sell, sublicense, or otherwise provide the Licensed Materials, or progenitors to third parties such as laboratories, departments, research institutions, hospitals, universities, or biotechnology companies for use other than for the purpose of outsourcing the Licensee's research.

Please refer to the Genomeditech Cell Line License Agreement for details.

Genomeditech